



## Dual Courtyard With Private Street Access.

Located only seconds walk to the Howard Smith Wharves, a multi-million-dollar entertainment and lifestyle destination, City, China Town and James St this stunning dual courtyard apartment will be sold very quickly.

Spanning across 116sqm this two bedroom, two bathroom, two courtyard with private street access, one car apartment has been recently painted and is packed full of features that even an experienced property purchaser will greatly appreciate.

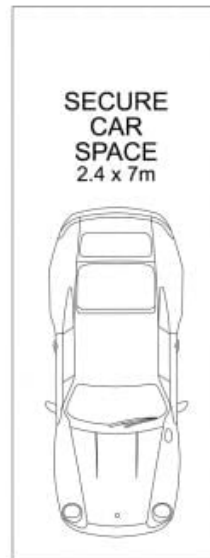
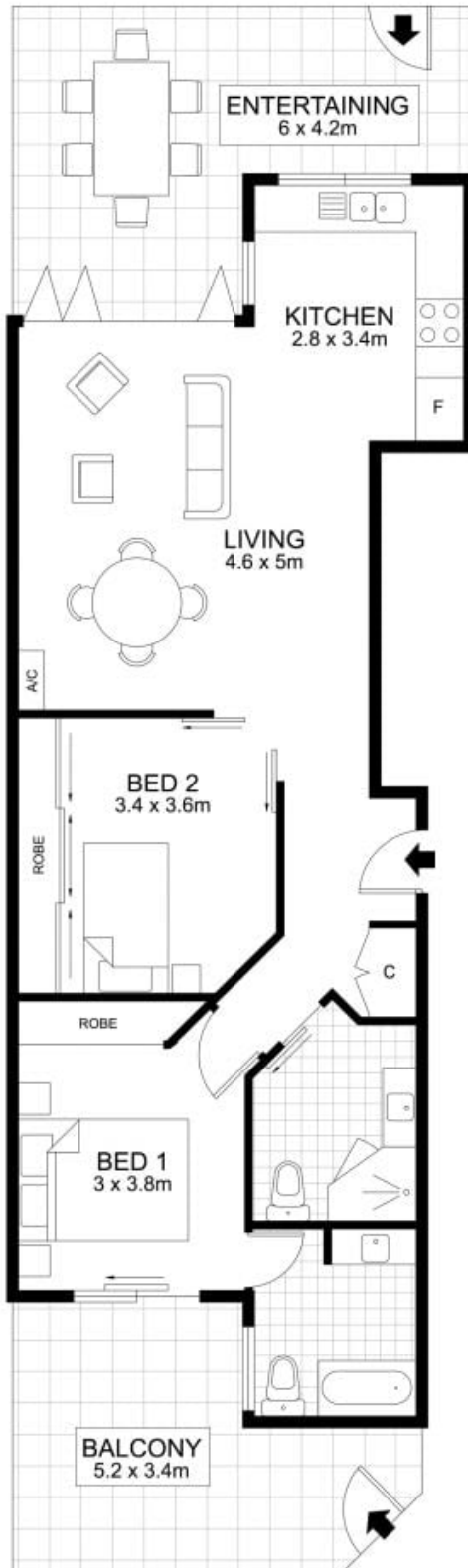
### Property Features:

- Body Corp: around \$4736 per year
- Rates: around \$350 qtr
- Gas cooking- Innovative bi-fold doors, opening into the large courtyard making it perfect for entertaining.
- Ensuite Features shower over bath with opening windows
- Main bedroom comfortably fits a king bed, double mirrored robes.
- Direct access to the private courtyard from the main bedroom.
- Pets are allowed
- Private street access

**Price:** \$442,00



**Grow Property Group**



Floor plan measurements are approximate and for illustrative purposes only. Scale in metres.  
 Floor plan created by Rolley Photo Media. [www.rolleyphotomedia.com.au](http://www.rolleyphotomedia.com.au)

