

## North East aspect, spacious, three bedroom apartment with panoramic views

We are super excited to present this highly sought after and most spacious Unit 1007 Gasworks Residences for sale! Boasting sweeping 270 degree views over the iconic Newstead Gasometer and the Brisbane River from a north-easterly aspect, this apartment is located in inner city Brisbane's most cosmopolitan and vibrant suburb.

The apartment boasts stylish, luxury living in a classic design featuring three bedrooms, two bathrooms and two study nooks. Prepare meals in the gourmet, entertainer's kitchen whilst admiring the expansive river views.

Features include timber floors with a light colour palette, a kitchen island bench 3 metres long and one-inch thick stone kitchen bench, zoneable ducted air-conditioning, laundry room, abundance of well-designed cabinetry, modern bathrooms with his and her vanities and a wraparound balcony - allowing breezes and picturesque views to the north, east and south around to Teneriffe Hill.

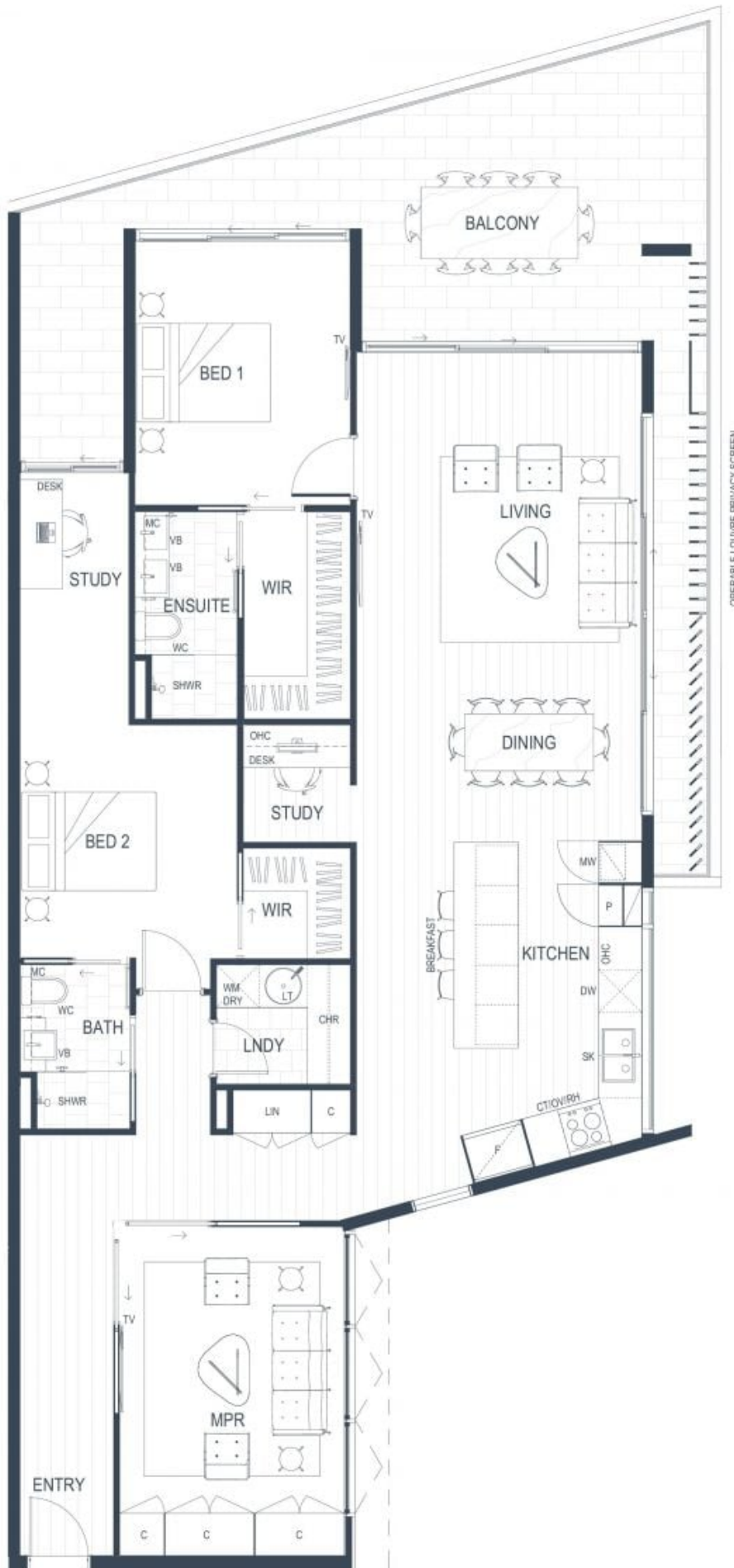
Two side by side car parks immediately outside the basement lift, along with two storage u

**Price:** \$1,525,000  
**Council Rates:** \$362.00 p/q  
**Strata Rates:** \$1,885.00 p/q



**Grow Property Group** **Sherie Jafari**

0493 435 713



MP-14  
 P5  
 1/75  
 UNL AND TILED  
 OPERABLE LOUVRE PRIVACY SCREEN

**GASWORKS**  
 RESIDENCES