

ELEVATE YOUR LIFESTYLE: LUXURIOUS LIVING IN THE HEART OF COMO APARTMENTS

Nestled within the prestigious Como Apartments, Unit 505 stands as a shining example of immaculate presentation, exuding the allure of a brand-new residence. It's a must-add to your property shortlist.

Crafted by the renowned Cavale, this residence promises a lifestyle of both opulence and security. The building boasts robust security features, including key-swipe entry, secure parking complete with a storage unit, dedicated on-site management, and the convenience of two rapid elevators. But the luxury doesn't stop there ? residents also enjoy access to a splendid swimming pool, a sun-kissed tanning deck, a fragrant herb garden, and a fully updated gymnasium.

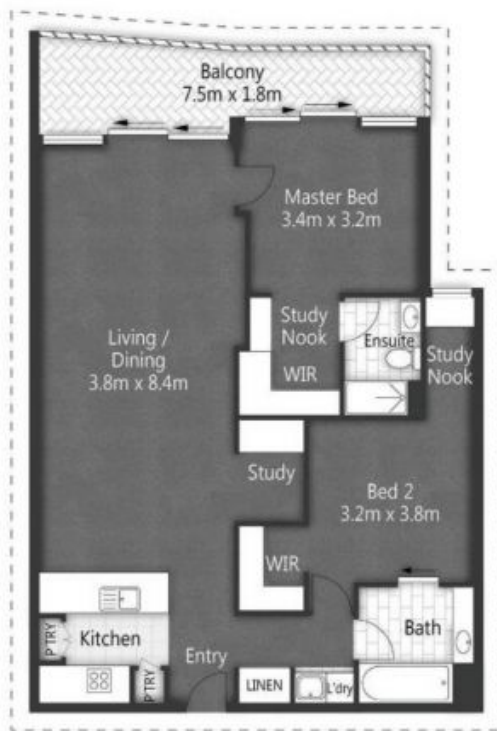
Perched on the fifth floor, this east-facing gem spans an expansive 115 square meters. As you step inside, you're greeted by a generously proportioned living and dining area, spacious enough to comfortably accommodate an eight-seater dining table and a king-sized sofa. Freshly adorned with plush new carpeting, this area sets the tone for elegant living. Two exceptionally spacious bedrooms beckon, each boasting ample room for a kingsize master bed and two bedside tables, while their built-in wardrobes enhance both convenience and style

Price: \$775,000



Grow Property Group Sherie Jafari

0493 435 713



505/47-53 Wyandra Street TENERIFFE (COMO Tenerife)

2 | 2 | 1

All dimensions are approximate; they are subject to errors and inaccuracies and no liability will be accepted.
Plans are shown for marketing purposes only.

