



2 2 1

Exquisite Newstead Oasis with Iconic Views: Gasworks Residences Await Your Disco

Price: \$830,000

Open Home Canceled

Primely positioned in the heart of Newstead, Brisbane's most prominent inner-city suburb, is this spectacular two bedroom, two bathroom and one car park apartment inside Tom Dooley's acclaimed Gasworks Residences. Situated on level four, stunning design and world-class features are the hallmarks of this dazzling home.

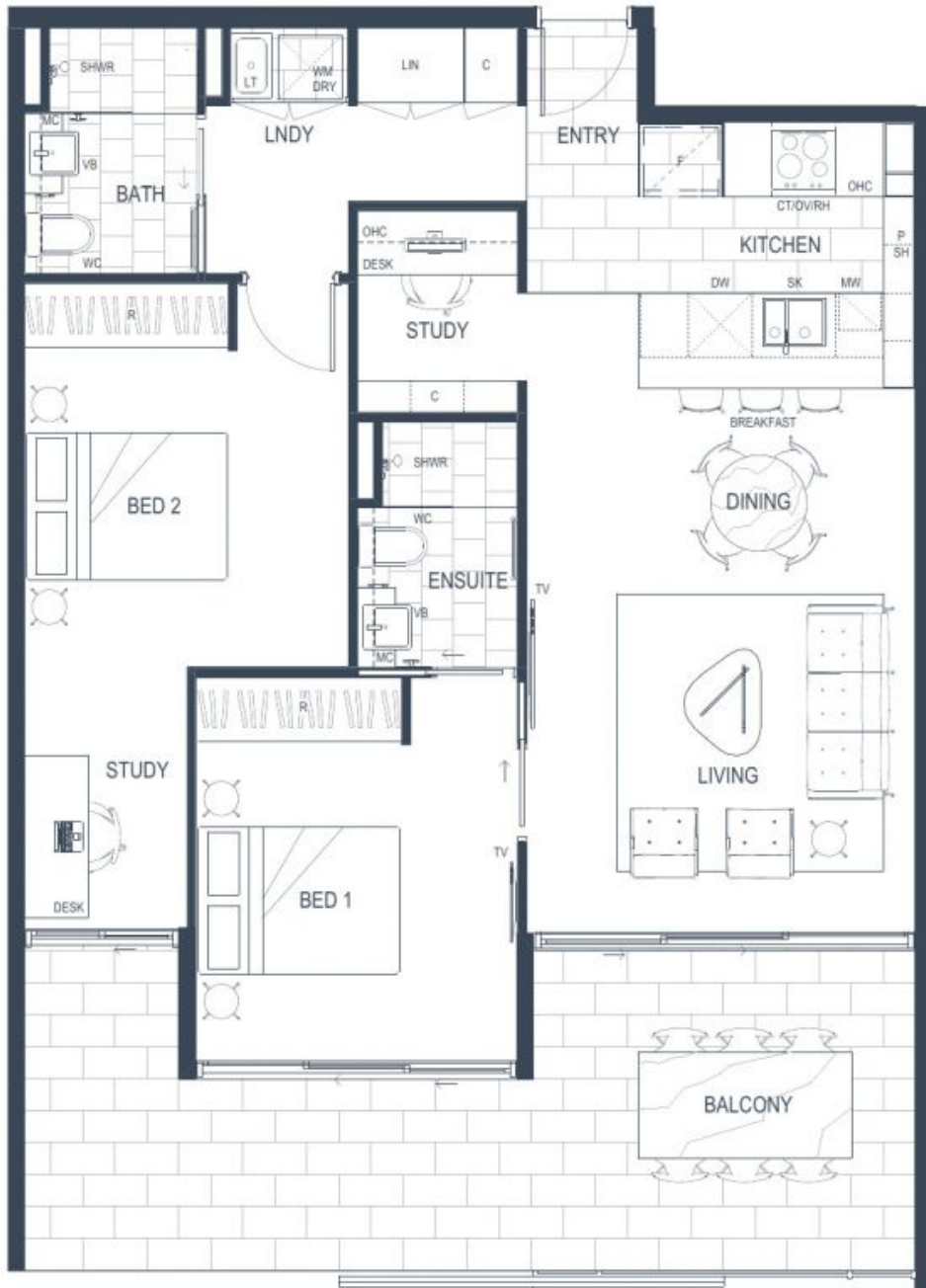
Superior amenities on offer include generously sized bedrooms, the master can fit a king bed, upgraded wooden floors, ducted air-conditioning, ample storage, green outlook, balcony access from the bedrooms with external sliding louvre panels for privacy, multiple study nooks, a stylish kitchen with quality European appliances, stone bench tops including an elegant waterfall island bench/breakfast bar, LED lights and glass splashback.

Elsewhere within the award-winning building, residents can unwind at the rooftop retreat which boasts a gymnasium, yoga terrace, heated 25m wet edge pool and private sunken courtyard.



Grow Property Group Sherie Jafari

0493 435 713



SLIDING PRIVACY SCREEN

N.B., Car park features a large roller door storage unit.

GASWORKS
RESIDENCES

APARTMENT
TYPE 12
115sqm approx

